



# SuperStack® II EdgeServer™ Pro 3000

*Integrated high-performance Windows® NT  
remote access server*



EdgeServer Pro 3000 provides powerful information access through the innovation of an integrated Windows NT Server within the SuperStack II system.

EdgeServer Pro 3000 consolidates both intranet, remote access and other server capabilities into a single, high-performance platform within SuperStack II. A perfect out-of-the-box intranet solution, the EdgeServer Pro 3000 is a compact, stackable module that seamlessly integrates with Windows NT for unparalleled ease-of-use and management. Since EdgeServer runs standard Windows NT Server (4.0 or higher), it is compatible with Windows NT applications and requires no additional

training, setup, configuration, or management for those who are familiar with Windows NT.

3Com has added value to Windows NT RAS (remote access services) by providing enhanced security, resource management and access control. As a result, access control can be applied to any of the EdgeServer RAS communications ports. This allows network administrators to specify which users can gain remote access to any particular RAS access port.

---

## *Key Features:*

### ■ Dynamic system preservation features.

- Optional mirrored disk drives prevent server crashes in the event of a single-unit hard drive failure.
- Standard error checking and correcting (ECC) memory detects and automatically corrects single bit memory failures.
- Thermal over temperature and fan failure sensors warn administrators of potential problems.
- Optional redundant hot swappable power supplies prevent server outages due to a single-unit power supply failure.

### ■ StackNet private high-speed bus

**interconnect.** Allows a star configuration from the EdgeServer Pro 3000 to the Access Concentrator 3000 modules. StackNet allows support for up to six Access Concentrator 3000 modules for a total of 144 T1 or 180 E1 connections.

■ **Multilink PPP protocol.** Combines multiple physical PPP links into a single logical link between remote and local endpoints, thereby allowing a remote access client to obtain more bandwidth than normally provided by a single physical link in order to achieve high transfer speed.





**3Com Corporation**  
 Carrier Systems  
 1800 W. Central  
 Mount Prospect, IL 60056  
 Phone: 800-USR-CORP  
 Fax: 847-933-5800

### Key Features continued:

- **Software compression.** Support for Microsoft® software compression of PPP datagrams for increased throughput speed.
- **Dial out and call back.** Microsoft RAS can originate PPP connections from the server to provide call back for security, and to reverse telephone line charges.
- **Browser-based documentation.** Comprehensive documentation on a CD-ROM that is easy to navigate using a standard Internet browser.
- **COM port emulation.** Allows the use of third-party COM port-based applications such as modem pooling.
- **Award-winning V.Everything® and x2™ technologies.** Supports x2 technology and the most common communications standards, including ITU-T V.34, ITU-T V.32terbo, ITU-T V.32, ITU-T V.32bis, as well as other ITU-T and Bell standards and rates, including ISDN.
- **High density packaging.** Integrates with the SuperStack II system for minimal space requirements and eliminates the need for dedicated cables to each modem.
- **EdgeWare.™** Applications such as firewall, security, authentication, enhanced RAS, collaborative computing, remote node acceleration, modem pooling and proxy server can run on the EdgeServer Pro 3000 and be used to service remote users on the edge of the network.

## Specifications

### Hardware/Software

One or two Intel Pentium Pro 200 MHz processors each with 256 KB of L2 cache  
 Conforms to the Intel multi-processor specification (MPS)  
 Four DIMM sites support up to 512 MB of ECC memory  
 Supports up to two 2 GB or two 4 GB mode 4 EIDE hard disk drives  
 Integrated 1.44 MB floppy disk drive  
 Integrated 16X CD-ROM drive  
 Integrated Adaptec 7880 Ultra Wide SCSI-3 interface for external SCSI devices  
 Integrated 10/100 Ethernet interface  
 Optional 4/16 Token Ring adapter  
 3 PCI slots (one open) and one open shared PCI/ISA slot  
 SVGA video with 1 MB VRAM  
 One serial port and one parallel port  
 Mini-DIN mouse and keyboard ports (mouse and keyboard not included)  
 Locking system cover and locking front door over floppy and CD-ROM drive  
 Redundant hot swap 100-240 VAC, 50/60Hz autosensing power supplies (one supply standard)  
 Windows NT Server 4.0 with five-client license

### Indicators

LAN transmit                      Power supply #1 status  
 LAN receive                        Power supply #2 status  
 Hard disk activity

### Operating Environment

Temperature: 5° C to 40° C Humidity: 20-80%, non-condensing  
 Altitude -300 to 3000 m

### Standards Compliance

<b>EMI:</b>	<b>Safety:</b>	<b>Immunity:</b>
FCC Part 15, Class A	UL 1950	EN 50082
EN 55022, Class A	C/UL	
Austel	EN 60950	
VCCI	JATE	
CE		

### Warranty

Two-year limited warranty; factory repair or replacement.

### Services

3Com SuperStack II customers are backed by a full range of services including toll-free technical phone support, product specification assistance, installation services, educational training programs, electronic information services, plus a variety of repair and service options. For more information on any service and support programs, call 800.231.8770.

## Ordering Information

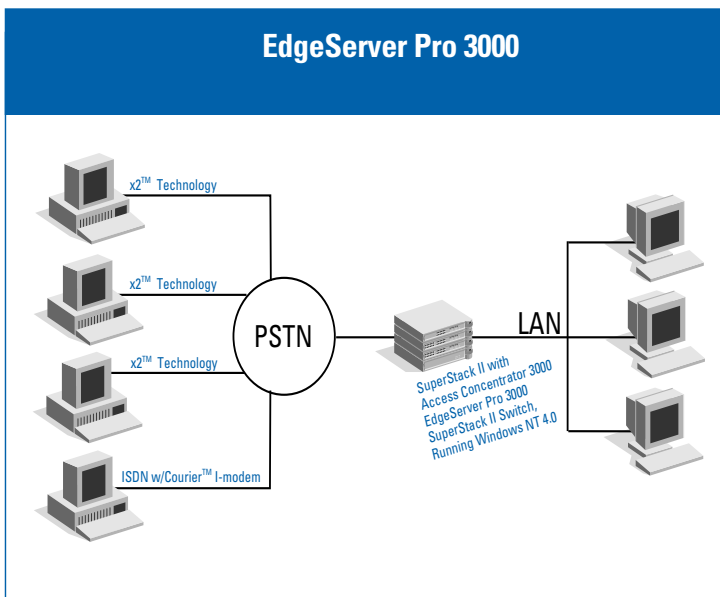
EdgeServer Pro 3000 with one processor, 2 GB hard drive, 64 MB RAM, power supply, Ethernet connections and Windows NT Server 4.0 **001943-0**

EdgeServer Pro 3000 with two processors, two 4 GB hard drives, 128 MB RAM, two redundant power supplies, Ethernet connections and Windows NT Server 4.0 **001945-0\***

Token Ring adapter **002146-0**

Please refer to price list for additional options and upgrades.

\*Support for two processor configurations available Q1 1998.



To learn more about 3Com products, visit our Web site at [www.3Com.com](http://www.3Com.com).

© 1997 3Com Corporation or its subsidiaries. All rights reserved. 3Com, U.S. Robotics, SuperStack, V.Everything, Transcend and the 3Com logo are registered trademarks and EdgeWare, EdgeServer, x2, and the x2 and SuperStack logos are trademarks of 3Com Corporation or its subsidiaries. Windows NT is a registered trademark of Microsoft Corporation; Pentium is a registered trademark of Intel Corporation; and all other brands and product names are trademarks or registered trademarks of their respective companies. All specifications are subject to change without notice.